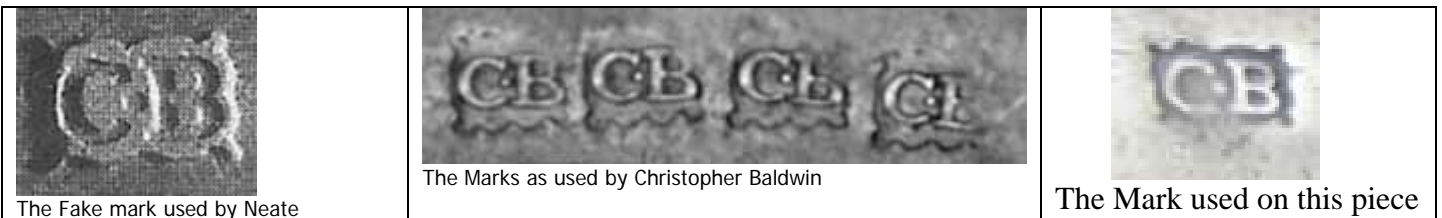


A FAKE LOVING CUP SUPPOSEDLY WIGAN

For one of these made about 1720 you might be asked to pay anything from £500 to £1200. This one has the Richard Neate fake hallmarks as though it had been made by Christopher Baldwin who was dead in 1725.

The colour/patina of the body is possible on such a piece that might have seen very little use and been kept in a good dry climate perhaps inside a cupboard or drawer but the handles look as though well made not too long ago (perhaps given a diluted acid wash to imitate grey aging) and the surface of the base and the inside is the same as the body whereas there at least you might expect to have seen some more intensive oxidation in the nooks and crannies.

This is a likely a good reproduction made in the early 1900s and the marks added in the 1920s or some time after – probably for export to the USA and probably to cheat collectors there and where it was found.



The Pewter Society Data Base has comprehensive details and comparisons of known fake marks and known marks used by the claimed Pewterers.

This Loving Cup (?) weighs 1032 grams and has a diameter of 6 1/8" and height of 5 1/2"

