

# British Pewter Marks of the 20<sup>th</sup> Century-

Selected from the website of

[www.pewtertankardsflagons.com](http://www.pewtertankardsflagons.com)

They offer a very large selection of Pewter marks from the  
Europe & the USA

Additional marks known to readers are welcomed by them at

[pewtertankardsflagons@netzero.net](mailto:pewtertankardsflagons@netzero.net)

**There is no other website, known to us, that offers such a  
comprehensive range of Pewter Marks.**

There are one or two additions this website has come across recently about which very little might be known



Abbey Pewter. Trademark of Osborne & Company,  
Sheffield, England. Mark used c.1920 - 1939.



William Adams Pewter, Birmingham and Sheffield England.  
1865 - c.1966. This trademark used since 1899.

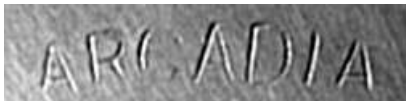


Alchemy Pewter, Sheffield, England.

<http://www.alchemypewter.com/about.html>



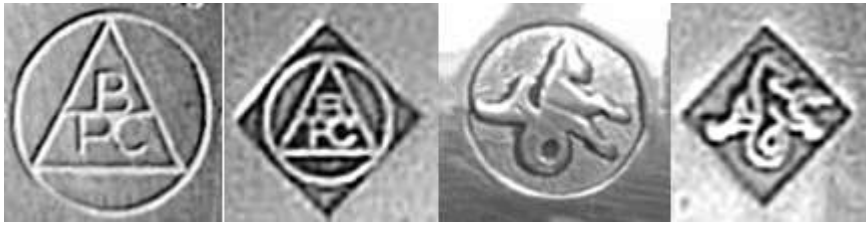
Alden Pewter trademark used by the Derby Silver Company. Derby trademarks on holloware were used from about 1879 to 1933.



Arcadia Pewter. Trademark first used by George Lee & Company, Sheffield, England from 1929 to 1967. Taken over by Julius Isaacs & Company in 1967 who continued to use this mark.



Philip Ashberry & Sons Pewter, Sheffield, England. Founded in 1829. In 1856 "& Sons" was added to the marks. Became Ltd. in 1900. Britannia figure mark used 1861 - c.1914. Closed in 1935.

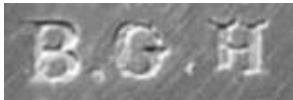


Association of British Pewter Craftsmen, founded in 1970.  
Supported by the Worshipful Company of Pewterers  
who used the seahorse mark from 1980.

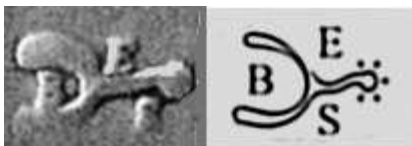
<http://www.britishpewter.co.uk/>



John Batt & Company, Sheffield, England. Used these  
marks on pewter 1920 - 1938. PARK trademark.



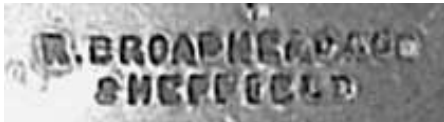
B.G.H., Birmingham Guild of Handicraft, Birmingham, England.  
Founded in 1895 by Arthur Dixon. Arts & crafts style.  
Amalgamated with E. & R. Gittons in 1910. Around 1920  
the Guild merged with Hart, Son, Peard & Company. In  
the 1930's the Guild focused on architectural metalwork.



Edwin Blyde & Company Pewter, Sheffield, England. Founded  
in 1798.



Broadhead & Atkin, Sheffield, England, 1834 - 1853.



R. Broadhead & Company, Sheffield, England. This mark was used 1853 - c.1859. From c.1859 to 1900 the R was dropped and the mark read Broadhead & Company over Sheffield.



Brooks Brothers. Manufactured by A.R. Wentworth, Sheffield, England since 1948.



Burlby Pewter, London, England, 1877 - 1920.



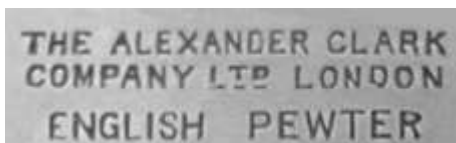
Cameo Pewter. Trademark of E.H. Parkin & Co. Sheffield England. Mark used 1925 - 1965.



Cheltenham. Trademark used by E.H. Parkin & Company Sheffield England. Mark used in the American market, mid 20th century, and distributed by the National Silver Company.



Civic Pewter, T. Land & Son, Sheffield, England. Used the Civic Pewter trademark from c.1920. E.H. Parkin took over the firm in 1953 and continued to use the Civic trademark until 1977.



Alexander Clark Company, London, England. Founded c.1891. Became Ltd. in 1912. In business, at least, into the 1940's.



Craftsman Pewter. Trademark of Viner's Ltd. Sheffield England. Marks used c.1926 - 1939.



Crown & Rose Pewter, Englefields Ltd., London, England. Brown & Englefield founded in 1885. This mark used from 1948. Englefields was bought by Royal Selangor in 1987.

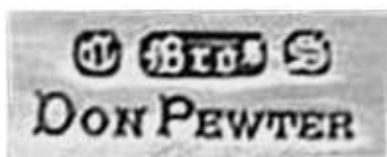


Cultonia Pewter. Culf & Kay, Sheffield, England. Founded in 1922. Cultonia mark used since 1946



James Dixon, Sheffield, England. Became Ltd. in 1929.

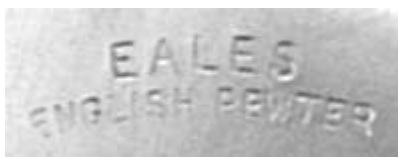
DIXON.....	1804 - c.1810
DIXON & SMITH.....	c.1811 - 1822
DIXON & SON.....	1823 - 1829
JAMES DIXON & SON.....	1830 - 1834
JAMES DIXON & SONS.....	1835 - 1851
JAMES DIXON & SONS SHEFFIELD.....	c.1851 - 1879.
JAMES DIXON & SONS SHEFFIELD with trumpet .....	1879 - 1927.
CORNISH PEWTER with trumpet.....	1927 - c.1980.



Don Pewter. Trademark used on pewter by Cooper Brothers, Sheffield, England, from 1926.



Alfred Dunhill Pewter, London, England. Their pewter wares were made by Englefields Ltd. and PMC (The Pewter Manufacturing Company) of Sheffield. PMC was founded around 1970.



Eales English Pewter. Manufactured for Eales by the Pewter Manufacturing Company of Sheffield England since 1970.



George Farmiloe & Sons, London, England, 1876 - 1940.



Fenton Brothers English Pewter, Sheffield, England, 1859 - 1919.



Arthur E. Furniss Pewter, Sheffield, England, 1859 - 1910.

12 Holly street.....1859 - 1862,  
 32 Rockingham.....1863 - 1870,  
 27 Carver Street.....1871 - 1899,  
 62 Broad Lane and 13 Garden St.....1900 - 1910.

Second mark used from 1872.

Name was A.E. Furniss & Sons from 1910



Gaskell & Chambers, Birmingham, England. Cornelius Chambers started Gaskell & Chambers in 1892. In 1902 acquired the James Yates firm. "Y" mark in a triangle believed used on pieces made with old James Yates molds. Sold pewter business to James Smellies in the early 1970's, who closed in 1983.



I. Gibson & Sons Ltd., Sheffield, England. Late 20th century.



Hall Brothers Pewter, Sheffield, England, 1951 - 1971.

**H L & C**

**SHEFFIELD**

Pewter wares made in Sheffield for Hamilton Laidlaw, wholesale jewelers, in Glasgow Scotland.

Mark used roughly from 1925 to 1939.





Harton & Sons Pewter, London, England., c.1860 - 1890.



Heraldic Pewter. John Round & Son, Sheffield, England, 1863 - 1957.



W & Co. Homeland Pewter. Trademark of Walker & Company, Sheffield, England. Founded in 1907. Produced pewter from 1930 to c.1940.



Howard Pewter. Walker & Hall, Sheffield, England. Mark used c.1930 - 1939.



William Hutton & Sons English Pewter, Sheffield, England. Began use of the crossed arrows mark around 1900 when they took over Creswick.



PEWTER PLATE, APPROX. 7" WIDE, WITH ENGRAVING, & BEADING. IT IS INITIALED "J.A", & HAS THE 6 CROSSED FEATHER MARK OF WILLIAM HUTTON & SON. -

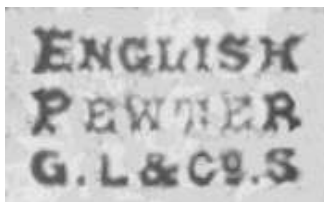
This well made beaded plate with engraved design on the rim bears the well known mark of William Hutton and Sons of Sheffield which they took over from the old Sheffield firm of Creswick in 1902. They used this mark from that date until 1930 when they, in turn, were taken over by James Dixon and Sons, Sheffield. The mark used either six or eight crossed arrows and this one with six is almost certainly the Hutton mark for 1902-1930. The beaded rim has been soldered on separately to the plate and the engraving appears to be engine turned from its very regular nature. 331gms weight.



Keswick School of Industrial Art, Keswick, Great Britain. Evening classes began in 1884, day classes in 1898. Closed in 1984.

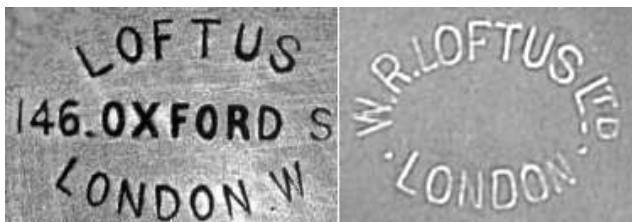


Knighthood Old English Pewter, A.E. Poston & Company, Birmingham, England, 1936 - 1953.



George Lee & Company English Pewter, Sheffield, England. This mark used from 1888 to about 1929 when the "My Lady" mark was introduced

Lion Pewter, British.....date unknown



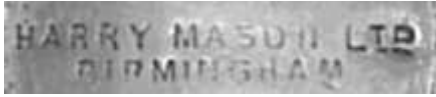
W. R. Loftus Pewter, London, England. From c.1859 to c.1940



Charles Rennie Mackintosh (b.1869 - d.1929), Glasgow, Scotland.



Manor Period Pewter. Trademark used by Travis, Wilson & Company Ltd., Sheffield. Marks used 1926 - 1939.  
Manor trademark first used by A. Milns & Company of Sheffield from c.1920 to 1926.



Harry Mason Ltd., Birmingham, England, c.1912.



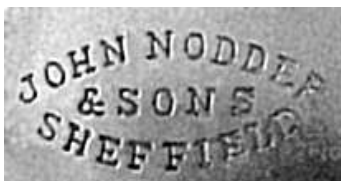
Mullingar Pewter, Ireland. Founded in 1974.



My Lady Pewter, trademark of George Lee & Company, Sheffield, England. Mark used 1929 - c.1967.



Nobleman Pewter, Wardle & Matthews, Sheffield, England, since 1965.



John Nodder & Sons Pewter, Sheffield, England, 1863 – 1904



Old English Genuine Pewter. The Cromwell Silver Mfg. Company, New York City, registered this trademark in July of 1931.

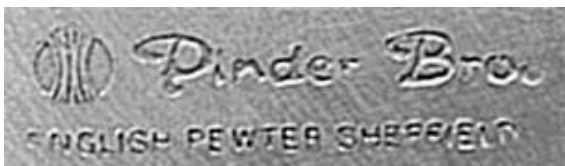
This is here because it is not ENGLISH.....



Thomas Otley & Sons, Sheffield, England, 1872 - 1911.  
Formerly Thomas Otley, 1861 - 1872.



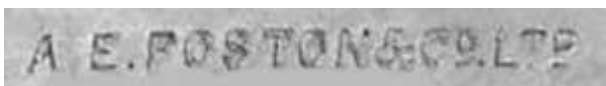
Period Pewter. Trade mark of Frank Cobb & Company, Sheffield England. Mark used from c.1926 to 1939.



Pinder Brothers Pewter, Sheffield, England. Produced pewter wares since 1963.

<http://www.pinder.co.uk/history.html>

**PMC, Pewter Manufacturing Company**, Sheffield, England.  
Also produced wares for other firms trademarks including Kent, Leonard and Eales. Founded in 1968.



A.E. Poston & Company Pewter, Birmingham, England,  
1936 - 1953.



Robert Pringle Pewter, London, England. Robert Pringle inherited his father's firm in 1862. About 1882 renamed the firm Robert Pringle & Company. Became Robert Pringle & Sons Ltd. in 1931.



Richard Richardson pewter, Sheffield, England, 1873 - 1924.



R.A.N.D. Pewter. Roberts & Dore Ltd. London & Sheffield England.  
Mark used since about 1920.



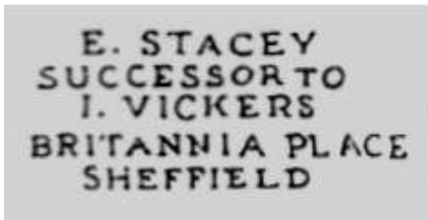
Roundhead pewter. Trademark used by Samuel Groves of Birmingham England between 1922 and the 1950's.



Shaw & Fisher Pewter, Sheffield, England. Founded in 1830. This mark used from 1872. Succeeded by James Deakin & Sons in 1894 who may have continued to use this mark.



Sheffield Mint Pewter, Sheffield, England, late 20th century.



1843 - 1856



1857 - c1900

Ebenezer Stacey Pewter, Sheffield, England. Succeeded I. Vickers. Ebenezer was John Vickers nephew.



Talbot Pewter. Trademark of Thomas Turner & Company, Sheffield, England. Talbot used on pewter wares produced in the 1920's and 1930's.



Tudric Pewter. Trademark of Liberty & Company, London. Manufactured for Liberty by W.H. Haseler from 1901. Most Art Nouveau production ended in 1914, but some designs were made into the 1920's. Designs by Archibald Knox, Reginald 'Rex' Silver and Jessie M. King.



Keith Tyssen pewter, Sheffield, England.  
<http://www.keithtyssen.co.uk/about>



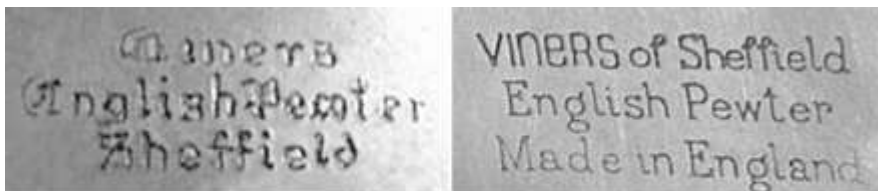
Unity Pewter. Manufactured by Barker Brothers, Birmingham, England, for the Cooperative Wholesale Society for pewter wares, c.1925 - 1939.



1769 - c1787

c1787 - 1836

I. VICKERS over Britannia Place...1836 - 1840,  
 I. VICKERS over Sheffield.....1840 - 1842.  
 James Vickers, Sheffield, England. Son John took over after his father's death in 1809.



1948 - c1960

c1960 - c1974

Viners Ltd. English Pewter, Sheffield, England.





P.H. Vogel & Company Pewter, Birmingham, England.  
Second half of the 20th century.



Wardle & Matthews English Pewter, Sheffield, England,  
from 1965.



A.R. Wentworth Pewter, Sheffield, England. Founded  
in 1949.

Pewter by Wilcox.....(unknown)





A.E. Williams and Thomas E. Williams Pewter., Birmingham, England, since 1945. Family of pewterers dating back to 1779.



Joseph Wolstenholme Pewter, Sheffield, England, 1824-1857.



James Yates Pewter, Birmingham, England. Succeeded Yates & Birch in 1860. James Yates died in 1881 and the firm was sold to Frederick and Herbert Greenaway who continued to trade under the James Yates name. Merged with Gaskell and Chambers in 1902.