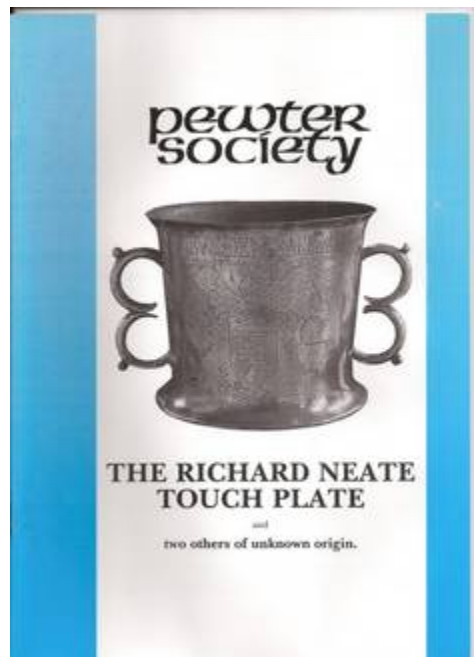


“A book every collector should have”

## **The Richard Neate Touch Plate and two others of unknown origin.**



In 1991 the Pewter Society bought a lead touch plate with some 140 fake pewterers' marks struck on it. This was acquired on the understanding that it was found among the effects of well-known recently deceased London dealer and that it had once belonged to a notorious dealer called Richard Neate. Subsequently this story of the origin of the plate was denied and other explanations as to where it had been sourced offered.

Whatever the truth this touchplate provides invaluable information about fake marks and it is still called the Richard Neate touchplate. Many Collectors in the 1920s were largely gentlemen of means. Their general code of conduct was not to criticise the collections of others. Perfect then for swindlers with some skill to produce for a collector a particular piece by a particular maker that he wanted – if it wasn't in stock it could be soon!

In the post 1945 world things began to change; during the term of office of Jimmy Fenton as President of the Pewter Society between 1949 and 1951 the presence of fakes and forgeries in collections and in the market place was openly acknowledged. By the third quarter of the 1900s Peal

and Michaelis had recognised that there were fake marks about. Of the 54 marks they identified however only nine of those can be seen on these plates.

Obviously the question is just how many fake marks and how much fake pewter is around? So the collector needs to be aware.

The best known seller or producer of faked pewter and the likely owner of this touch plate was Richard Neate of London (trading as "Bygone Days" from 92 Albany Street, Regent's Park London NW1 in July 1932). His advertising in 1927/8 (also from this address) claimed to be the "Cheapest House in Britain FOR ANTIQUE PEWTER".

He is believed by some to have had his own hallmarks one of which would be the initials "NR" (another was a distinct Griffins head facing left).

He died in 1953, he was not a rich man (according to his probate.)

An unanswered question is where did this plate, and the punches that made the marks go after 1953 and until 1991? Who had it and who used the punches? Perhaps someday the person/s(?) handing this on in 1991 might care to answer those questions, but by 2011 this writer certainly does not know for sure.

This booklet produced by The UK Pewter Society in 1996 has 35 pages.

The touchplate mentioned and illustrated here is shown and also the other two touchplates.

Two pages simply list the 134 touches and marks shown. Pages 11 to 21 show some of the genuine marks next to the fake marks with commentary and is well illustrated.

Pages 22 to 27 show other copy marks recorded on the Neate touchplate. As these are not to be found on the real London Touch Plates held by the Worshipful Company of Pewterers then comparisons are not shown in this booklet with the real marks.

Membership of the UK Pewter Society would however enable anyone who wished to print off from their database a recognised real mark and compare it with any on a piece of pewter seen. Ownership of this book

will give the reader an idea of these other marks now considered fake, and intended to deceive.

The booklet concludes with some detail of the other two touch plates and two pages concerning what is known about “Neate – The Man”.

Two illustrations follow then as example of the contents.



The Neate touch plate (dimensions 8½ x 12 inches)

Richard NORFOLK, No. 107, O.P. 3409, LTP. 902



Again, crude fleur-de-lys with poor definition and less ornate. Lion statant lacks definition; right hind leg does not depict muscled thigh. No space before R on genuine mark.

Richard PITTS, No. 3, O.P. 3697, LTP. 924



Much smaller mark than original. Device resembles a greyhound rather than a hare.

Richard POOLE, No. 114, O.P. 3721, LTP. 930



Engraver of fake touch obviously having problems with fleur de lys, which is again poorly engraved. Tudor rose reasonably good but will not bear close scrutiny. 'Richard' weakly cut in fake mark. No space before 'POOLE' on fake mark.

William SHAYLER, No. 78, O.P. 4226, LTP. 849



Crescent poorly depicted. Coronet in centre of touch whereas in original mark it is off centre; to the right. 'S' has appreciably larger lower loop.

*Seen on a pair of fake octagonal rimmed plates.*

**“The Richard Neate Touch Plate and two others of unknown origin”**

is available from the Pewter Society at a price of £3 plus £1.50 for first class post and packing within the UK (**total £4.50**) – it is good value for any new collector!

Book size (front) 11 5/8” x 8 1/4”

To buy this booklet contact - [publications@pewtersociety.org](mailto:publications@pewtersociety.org)

The originator of this website is the publications officer (in 2011) for the UK Pewter Society. There are no commissions or benefits to this website of recommending this booklet. It is simply here to encourage interest in the subject – and perhaps to assist your collecting.