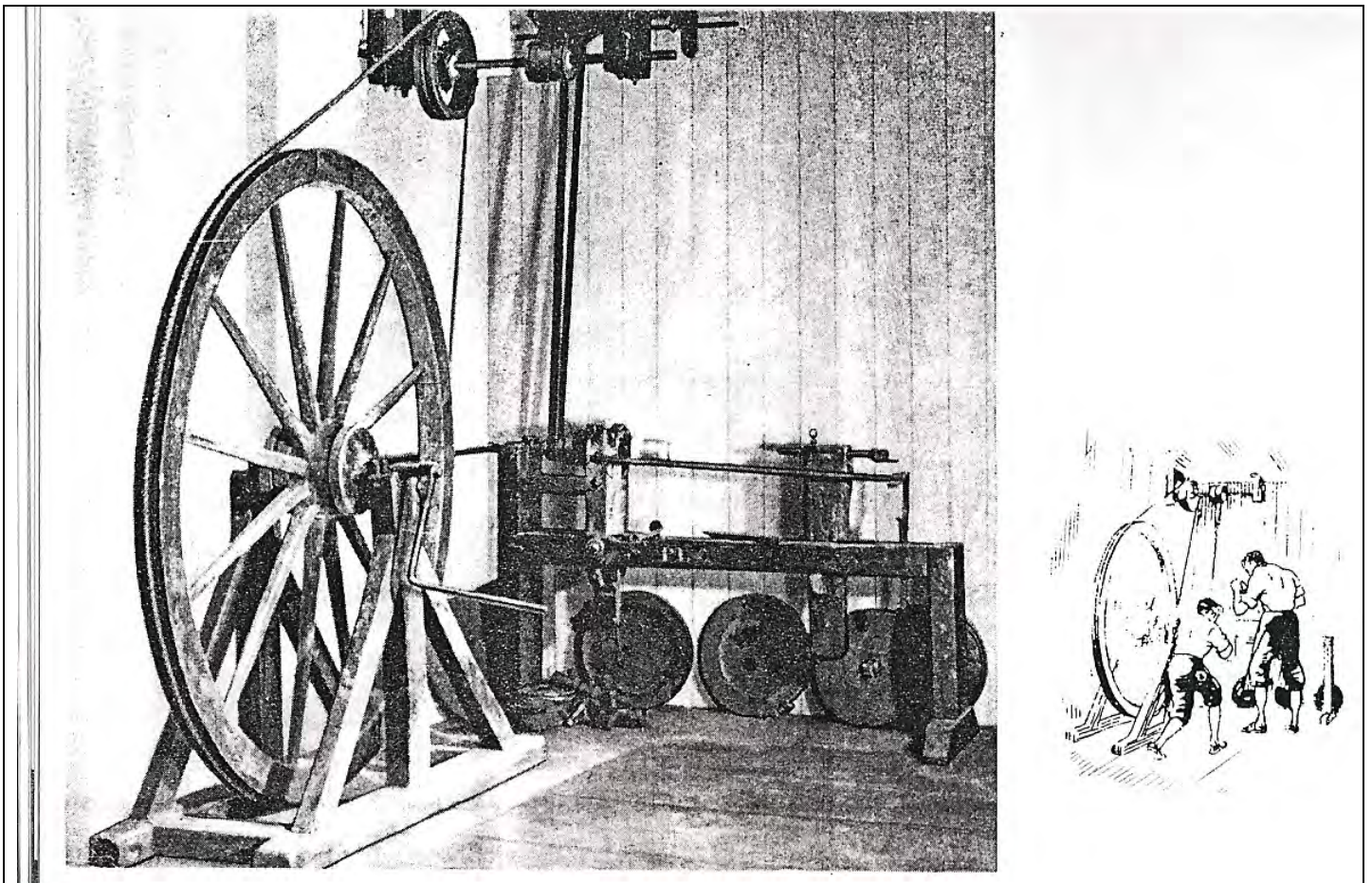



EVIDENCE OF A GASKELL

BIRMINGHAM PEWTER MUSEUM

The following extract is taken from a 20th century sales leaflet by the Gaskell & Chambers Pewter Making Business.



 It is with pleasure that we present "James Yates" Genuine Old English Cast Pewterware, which is made from the original moulds, all over 100 years old. James Yates was a famous old pewterer way back in 1830, and in his day the method of motive power to turn the lathes was for a boy to operate the handle of the big wheel reproduced in this photograph. Unfortunately this wheel, which occupied a prominent place in our Museum was destroyed when the premises were "blitzed" by an enemy air raid in 1941.

Although modern methods of motive power are now used, the craftsmen who turn and produce the Pewterware use all the skill and intuition of the old craftsmen, in fact it takes years of apprenticeship and practice before they become fully efficient to produce these famous pewter pieces.

The marks that were impressed on the Pewterware by James Yates himself are retained to this day, and all lovers and collectors of Pewterware, will know, to secure a piece stamped with the name of James Yates and the ⚡ mark means he is in possession of the best that is to-day available in Genuine Old English Cast Pewterware.

We are searching for any more information regarding this museum. If you have any knowledge of this museum please email –

johnstephenbank@btinternet.com