

A Munday Creation - or is it?

The pewter measure illustrated below was shown to this writer with the question -
what do you think about it?

The question I ask myself is -

"Would I Buy This Piece?"

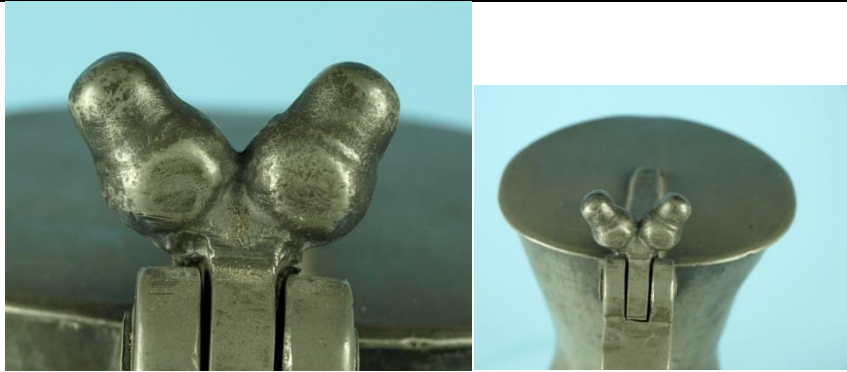
So why not look at the photographs and see what you, the reader, think about this piece?

It is easy to say that because Richard Munday handled it, and because of the heading to this article, that it must be a fake.

But it should always be remembered that Richard Munday had some 70 years dealing in Old Pewter. He had very many loyal customers from all walks of collecting life who stayed with him over very many years, and he did sell a lot of really good pieces, and also that much of his own collection was exceptional.

Here is the piece which this short article is about -





The Acorns and signs of wear



The neck and the mark in it



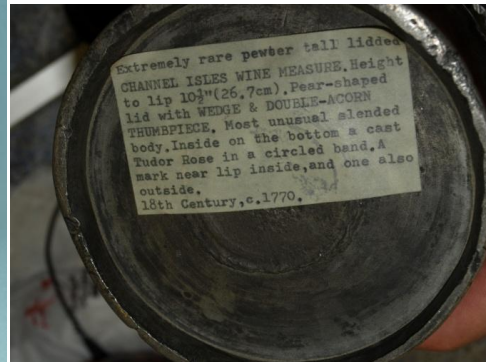
the mark in the base



Hammer marks to the belly



Strange mark to the neck on the right hand side -



What a delightful body shape - and our good fortune that Richard Munday was faithful to his typewriter.....

So - would I buy it? -

No I would not. (unless it was inexpensive)

- as a curiosity it could be good value

Why?

I list below how I would see this for myself -

1) - This is a piece that has likely seen bad times and has been rescued. It looks to me as though a whole new lid, hinge assembly, and handle have been fitted.

2) The handle to me looks a really nice, well shaped handle - but not shaped for this type of measure.

3) The mark just within the neck and the rose in the base -

The mark in the neck is surely what has been called "the German (Spread) Eagle" ?

The mark in the base I have seen versions before, and some were not very old, in Swiss measures.

4) As relates to the mark in the neck one expert regards all such Spread Eagles as Germanic.

I have looked at this and found such Spread Eagles throughout Europe - on old (1500s) Spanish Ceramics in the Valencia Museum, on French Wood Carvings (1500s), used in Scotland in the early 1600s, used by a maker of 1604 English Cast Firebacks, used on a proposed seal for Charles II, and used in old English carved oak panelling/furniture - from as early as the 1400s.

Yes the Germans used them a lot but so did others in Europe indeed within England.

And here if the old Rose is not later cut and put into the base,(and I see no sign of that - but have had pieces where this had been done - badly) then was it Swiss? - is a question I would ask myself.

Indeed to me - it would be likely to be an old Swiss/German (border) damaged piece - that was thought with a little help - could be a very rare Channel Islands Measure.

4) It looks as though the belly may have had to be knocked out. I mean to infer that those hammer marks are for me, a sign of an amateur repairer in a hurry (All those hammer type marks on the waist I have seen before where the waist has been restored to shape after suffering an inward impact of some sort - not huge but sufficient to misshape.)

5) (this maybe repeats some of the above) - Would I be right in thinking that it is likely the stomach/belly has been damaged as crumpled inwards a little at some stage and then hammered out back into shape - ie - it all has the look of a resurrected, wrecked piece (not shipwrecked), that has been quickly put back into fair shape and had a lid and handle added.

6) The supposed marks to the outer neck - I have seen the "bars" and just considered that some form of damage or messing - I cannot make out any clear mark.

7) To be clear - I am perhaps writing too much about things I have not handled, and not personally seen.

Yes indeed - it is a rare and slended (Mundey typed word), and likely early, body (whatever that is). Richard Mundey would also likely know what the rose in the base meant.

8) So to me - this was a reconstruction - (Richard Mundey seems to have produced a number of these).

.....
So to conclude that having searched my limited information for Swiss/German/French measures and failed to find any where the belly line and tall neck exactly follow this piece - does a reader know of such a European piece?

Such a body shape is unusual, and has not been found in Channel Islands pewter.

Reader's views are welcomed!

.....
This website thanks, and acknowledges Giles Bois of Jersey for all photographs shown here in this article.