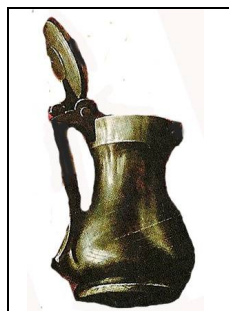


1500 – after 1563 - Antwerp –

Dean of the Antwerp Saint Luke's Guild - artist Jan Sanders Van Hemessen laid the foundation of 17th Century Flemish Genre Painting.



A look at the Pewter mug to the right with a little light editing (not a steady hand...)



Something found in the Thames.....perhaps....and perhaps similar to the above.....follows -

An Early Pewter Bulbous Flagon

Said to be Circa 1500

The domed cover with a central boss and twin ball thumbpiece, strip handle, 29.5 fl oz capacity 8" or 20.3 cms high overall. Found damaged in the River Thames at Deptford in 1908. Repaired to front right side of neck. **one of the earliest known flagons.**

Richard Munday own private Collection

Literature – Museum of London 1989 – A celebration of the craft No.40

Peal British Pewter 1971 fig 21

Little Collection Sale Christies May 2007 lot 76

A sale estimate of £6000 to £9000 but unsold at the sale



A reader emails to say –

This body and lid shape is very common on early Dutch flagons. If you've got a copy of the excellent catalogue of the 2004/5 exhibition at the Boijmans Museum in Rotterdam, you'll see quite a number illustrated there. I felt at the time that, despite its alleged provenance, this flagon was probably Dutch, and I still think that is likely to be the case. The Boijmans catalogue, by the way, also illustrates quite a number of paintings depicting pewter.